



AUCTION

LEADING THE INDUSTRY SINCE 1945

MONDAY – JULY 2, 2018 – 6:00 PM

32+ Acres Wooded Nature Land

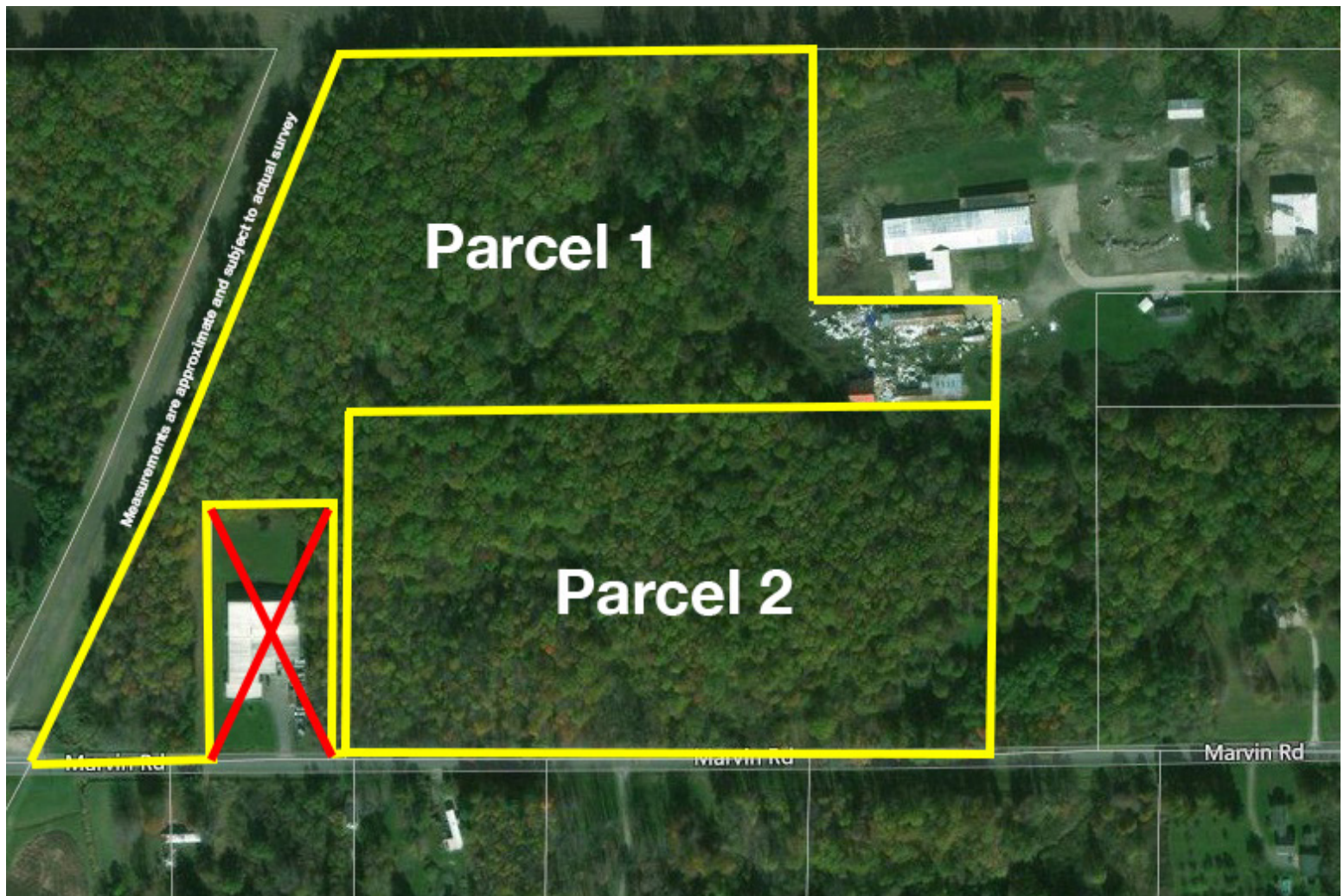
W/TIMBER & MAPLE SYRUP TREES

Plus Shop Buildings – Offered In Two Parcels - Andover Twp. – Ashtabula Co., Ohio

Absolute auction, all sells to the highest bidder(s) on location:

MARVIN RD., ANDOVER, OH 44003

Directions: From RT 7 south of Andover and north of RT 322 to Marvin Rd. and auction. Watch for KIKO signs.



Information is believed to be accurate but not guaranteed.



330.455.9357 • kikoauctions.com





KIKO AUCTIONEERS

2722 Fulton Dr. NW, Canton, OH 44718

kikoauctions.com

MONDAY – JULY 2, 2018 – 6:00 PM

32+ ACRES WOODED NATURE LAND

W/Timber & Maple Syrup Trees
Plus Shop Buildings – Offered In Two Parcels
Andover Twp. – Ashtabula Co., Ohio



Members – State and National Auctioneers Association



PARCEL #1: 18+ acres wooded land, mostly maple w/some harvestable timber & wildlife. Buildings include: 40'x40' barn, 20'x48' shop building w/concrete floor used for maple syrup production (former sawmill), and 20'x110' pole building w/concrete floor. Approx. 230' frontage on Marvin Rd. and driveway access from RT 7.

PARCEL #2: 14+ acres wooded land, mostly maple w/some harvestable timber, wildlife & nature. Approx. 1,050' frontage on Marvin Rd.

NOTE: Property has been used recently for maple syrup production, 3,200 taps and line. Nature & hunting. Lots of possibilities!

TERMS ON REAL ESTATE: 15% down auction day, balance due at closing. A 10% buyer's premium will be added to the highest bid to establish the purchase price, which goes to the seller. Any desired inspections must be made prior to bidding. All information contained herein was derived from sources believed to be correct. Information is believed to be accurate but not guaranteed.

AUCTION BY ORDER OF: David E. & Elvesta M. Miller



Auctioneer/Realtor®

JOSEPH F. GORDON

330-805-7627

joegordon@kikocompany.com



330.455.9357 • kikoauctions.com

